

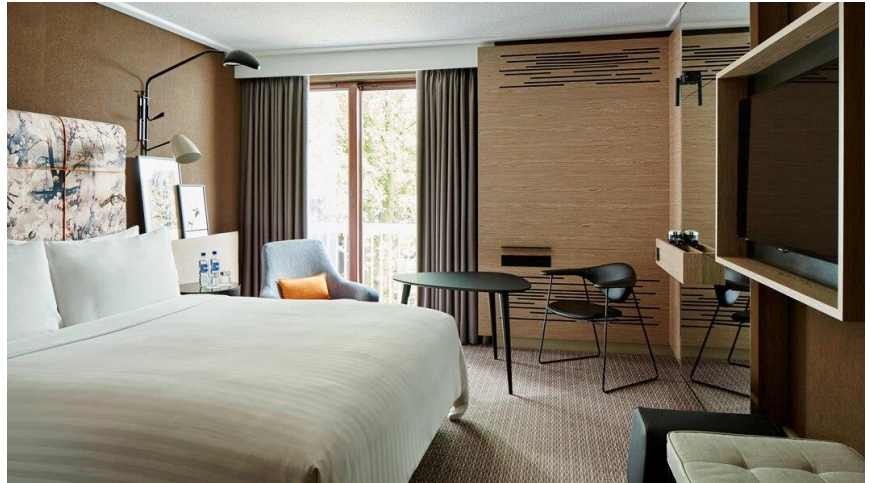
BERNE UNION CLAIMS & RECOVERIES SPECIALIST MEETING – LONDON, UNITED KINGDOM 15th– 17th April 2020

MEETING VENUE & HOTEL INFORMATION

**128 King Henry's Road
London
NW3 3ST
United Kingdom**

Closest Underground Station is 'Swiss Cottage' which is on the Jubilee Line (the grey line)

PDF to underground map: [HERE](#)



London Marriott Hotel Regents Park offers everything you need to experience England's capital city in style. The hotel effortlessly blends style, substance and award-winning service. Relax after a long day of meetings or exploring the city in our spacious, recently refurbished rooms and suites with pillowtop beds and high-speed Wi-Fi, some of our rooms also offer private balconies. Stop by and enjoy delicious Italian dining at our on-site Carluccio's Restaurant or keep up with your workout routine while in North West London in our fitness centre, pool and sauna.

Room Type	Cost single / Double Occupancy
Deluxe Room	£190 / £203

These prices include:
Buffet Breakfast, access to the gym, WiFi

Extra nights in the Novotel Hotel:

UKEF have secured this price for you until Sunday (checkout) so you can extending your stay and enjoy a weekend in London for the same price.

Cancellation terms:

Between 29 to 90 days prior	15% cancellation fee
Between 14 to 28 days prior	30% cancellation fee
Between 7 to 13 days prior	60% cancellation fee
6 days prior to night of	100% cancellation fee

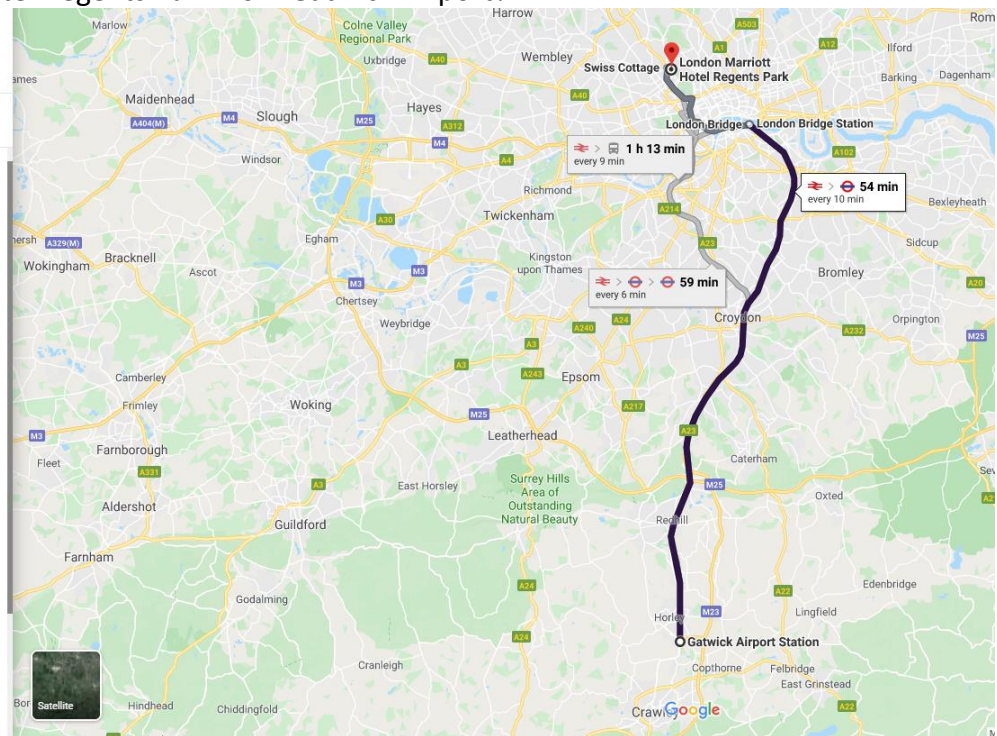
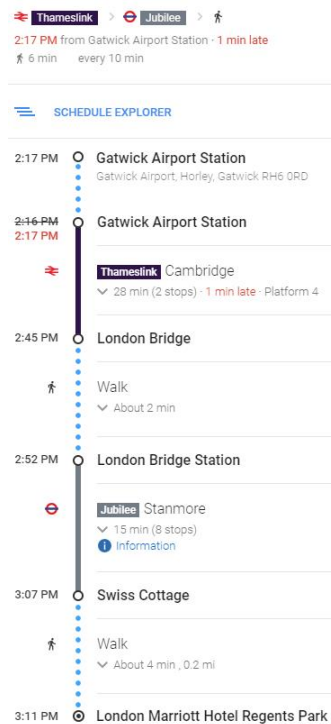
If your flight arrives in the early hours of the morning, you will need to book the hotel room from the night before, to avoid any disappointment.

Check in is at 3:00pm and check out is at 12:00pm. If any requirements for a late check out are needed please ask the reception desk and they will accommodate you where possible.

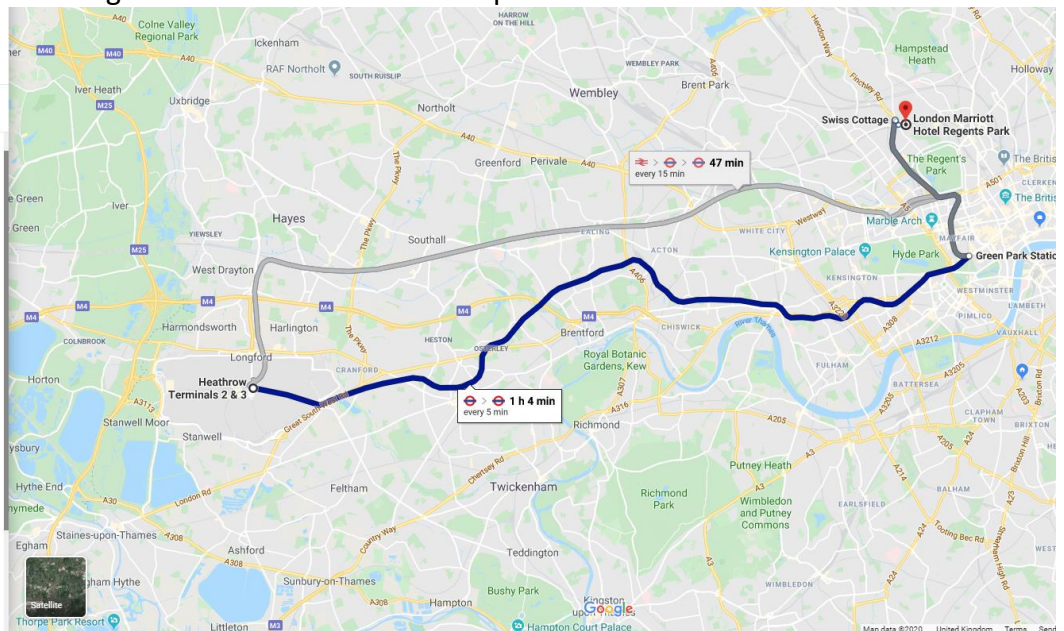
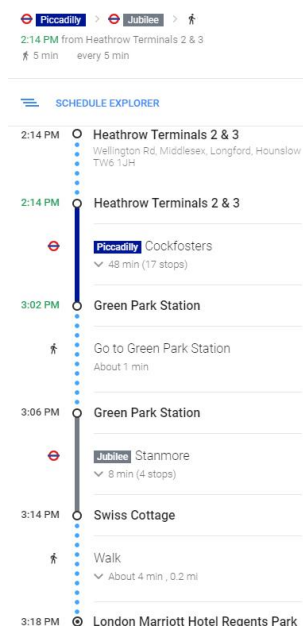
Please make your hotel reservation before **4th March 2020**.
[Book your group rate for Marriott Regents Park](#)

Location and Directions using public transport.

How to get to Marriott Hotel Regents Park from Gatwick Airport?



How to get to Marriott Hotel Regents Park from Heathrow Airport?



You can check your journey to the Marriott Hotel Regents Park on google maps from any of the airports in London. Click the link and tap on 'Directions' [HERE](#)

Visa Information

1. To check if you need a visa to visit the UK, please check here:
<https://www.passportindex.org/comparebyPassport.php>
2. Delegates are advised to apply for a Business Visa to attend the Claims & Recoveries Meeting in London.
3. For a Visa invitation letter (recommended for all guests) please complete the details below and send to Michelle Ford at UKEF : michelle.ford@ukexportfinance.gov.uk
 - **Title:**
 - **Name:**
 - **Surname:**
 - **Company:**
 - **Job Title:**
 - **Date of birth:**
 - **Passport Number:**
 - **Issue Date:**
 - **Valid Date:**
 - **Date of Arrival:**
 - **Date of Departure:**

Temperature:

Average temperature in April: Average low: 10°C; Average high: 20°C

Currency: Great British Pounds (GBP) only

Electricity: The electric current in the UK is 230 Volts. In the UK, the power plugs and sockets are of type G. The UK has three-pin rectangular blade plug. Therefore, if your plug is different, we recommend you travel with an adaptor. European are available in the hotel rooms but are limited.

General Tourist Information

London, United Kingdom

Advised Clothing:

Please ensure you bring an Umbrella and a warm coat; the weather is often unpredictable in London as we're sure you've heard before!

During the conference the dress code will be Smart / Business

During the dinner the dress code will be Smart / Business

Currency: the only currency accepted in London is GBP. Foreign currencies can be exchanged at the hotel or at one of the many currency exchange shops in London.

Credit & Debit cards: American express, Mastercard and Visa are widely accepted.

Banking Hours: Mon-Fri: 09:00 – 16:30

Tipping: Tipping for services in restaurants is not obligatory but often a standard practice and is generally 10 – 12.5%.

See the Sights!:

Primrose Hill	0.6 miles
Freud Museum	0.7 miles
Regents Park	0.8 miles
Abbey Road	1.0 miles
London Zoo	1.1 miles
Camden Market	1.2 miles
Sherlock Holmes	1.6 miles
Madame Tussauds	1.8 miles

Contact Information:

For Berne Union Secretariat please contact Nicole Cherry

+44 (0)207 841 1118

ncherry@berneunion.org

For UKEF please contact Michelle Ford

+44 (0)207 271 8177

michelle.ford@ukexportfinance.gov.uk